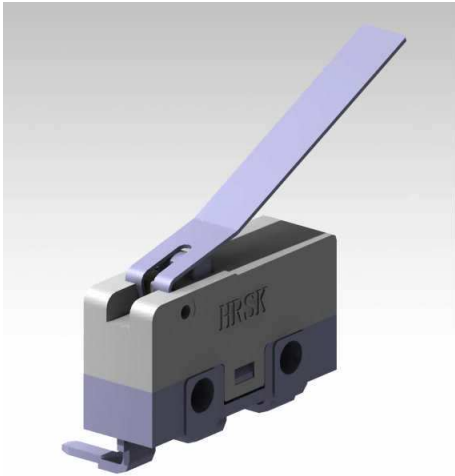


# KSM SERIES



## ◆ Feature

- Snap in structure in Compact body size
- Flux-resistance structure with integrally molded terminal

## ◆ Performance

Items		KSM2C-F1LB
Ratings (max)		5A 30V DC (Resistive Load)
Contact resistance (Initial/After operating life)		30mΩ Max / 50mΩ Max
Operating temperature range		-25℃ ~ +85℃
Insulation Resistance		100MΩ 500V DC
Withstanding voltage		1000V AC for 1min
Service life	Mechanical	1,000,000 Cycles
	Electronic	700,000 Cycles

## ◆ Agency Approvals

Series Name	Approval standard	
	UL (UL61058-1)	TUV (EN61058-1)
KSM2A	E330940	R 50165060

## ◆ Operating characteristics

NAME	OF	PT	OP	OT
KSM2C-F1LB	MAX 245mN	4.0mm MAX	14.3mm MAX	1.0mm MIN

## ◆ Dimensions(mm)

NAME	DIMENSION	PCB reference mounting hole
KSM2C-F1LB		<p>PCB Mounting hole</p> <p>Circuit diagram</p>